



Subject: OneTouch_USB.EXE – Manual Installation of Maxtor OneTouch, USB Drivers for Windows 98SE.

Summary: Graphical Procedure for manually installing Maxtor OneTouch USB Drivers for use with Microsoft Windows 98SE (Second Edition).

1. Download **OneTouch_usb.exe** from this web site.



OneTouch_USB.exe

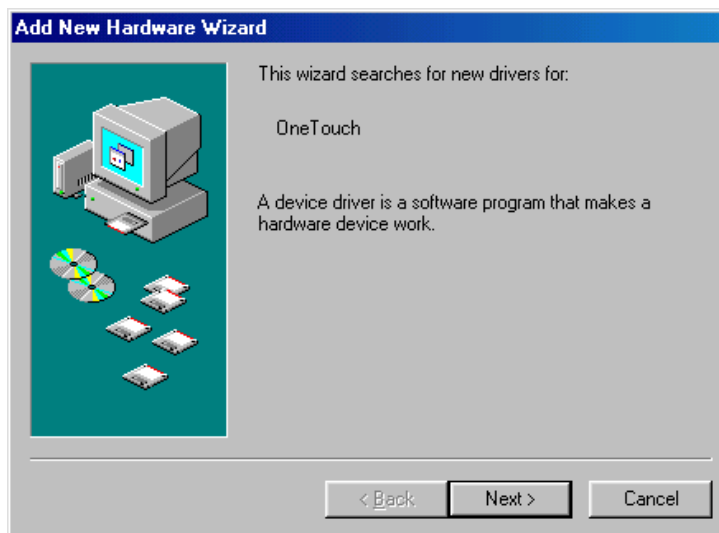
2. Extract OneTouch_usb.exe to the computer that the Maxtor OneTouch drive is connected to. Upon extraction, the *OneTouch_USB* directory will be created on your system.



OneTouch_USB

Suggestion: Extract the OneTouch_usb.exe to the Desktop of the computer that you will connect the Maxtor OneTouch drive to.

3. Shut down your computer and connect the Maxtor OneTouch drive to an available USB interface on your computer. Once connected, apply power to the system.
4. After Windows 98SE starts, the *Add New Hardware Wizard* box will appear.



Click the **Next >** button to continue.



5. On the next page, select "Search for the best driver for your device..." and click the **Next >** button to continue.

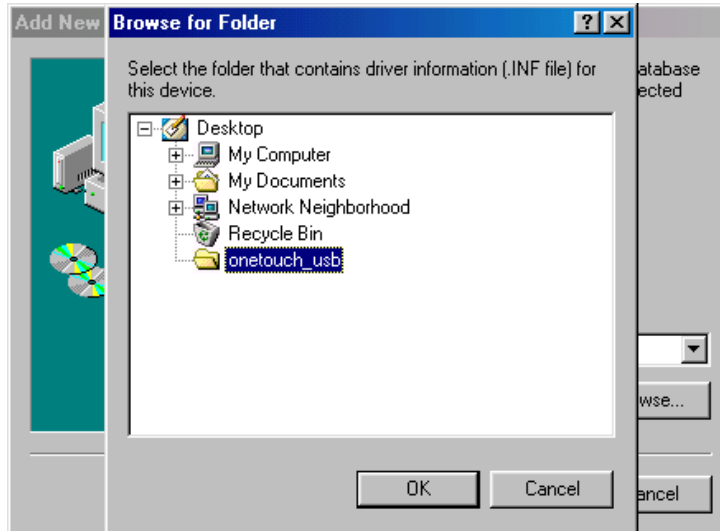


6. On the next page, check the "Specify a location:" checkbox and click on the **Browse...** button.





7. In the *Browse for Folder* Window, locate the *OneTouch_USB* directory and click the **OK** button.



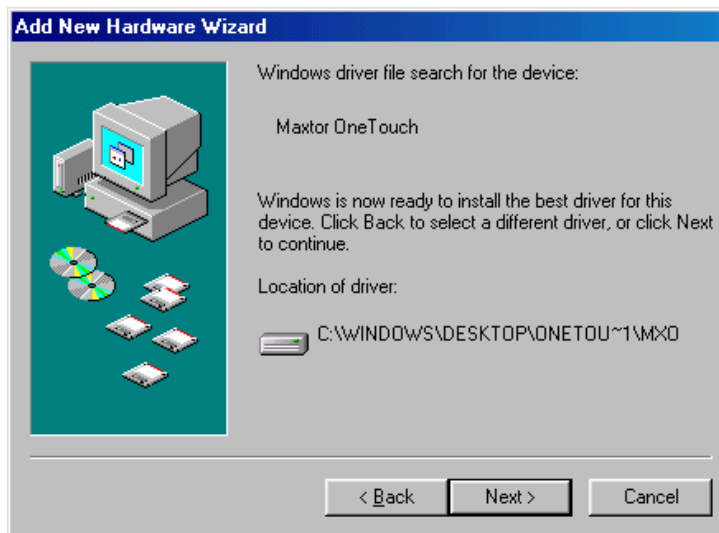
8. Click on the **Next >** button to accept the selection of the driver.



NOTE: The path identified in the image will vary depending on the location of the file. At this point the Maxtor OneTouch software driver will load on your Windows 98SE computer.



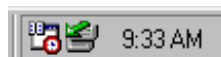
9. Click **Next >** again...



10. To complete the installation, click on the **Finish** button and restart your Windows 98SE computer.



11. At this point the Safely Remove Devices Icon will appear in the TaskBar.





12. When finished, the Add New Hardware Wizard will appear for a second time. Repeat Steps 1-9 to install the Storage Adapter Bridge Module.

